

Congratulations you have just purchased the finest U.S. Made Aluminum 1 Piece Heater / AC delete panel with drain on the market.

Quick check list of what we received:

- Aluminum 1 Piece Heater / AC delete panel with drain
- HVAC Gasket \$20.00 Value
- 3/8" inside Diameter drain line
- 2 Clamps for the above drain line
- Optional add on Cowl panel seal \$20.00

Quick technical stuff that you can skim over or read:

- Our unit is .60 Aluminum 5052-H32 alloy
- The aluminum panel itself has a volume of 29.26 cubic inches
- With a density of .0968 pounds per cubic inch of aluminum would equal a mass of 2.83 lbs per panel
- With the addition of the Gasket, Hose barb fitting, clamps and drain line you will just be under 3lbs.
- To give you an idea of mild steel units on the market. Mild steel is .284 density. So if this unit were to be built in mild steel it would weigh almost 3 times as much, 9 lbs. !!!

OK enough of that lets lose some weight and look like we care about our car. First things First... We gutted the old heater box and now have a clean slate. Prep your fire wall. *See Image 1.*



Image 1



Image 2

We will now take our HVAC gasket that is included and shoot the delete panel side with spray adhesive. *See Image 2.*

Let adhesive set then apply to the back of your 1 Piece Heater / AC delete panel with drain. *See Image 3.*



Image 3

While we are waiting for that to tack up we will have wire wheeled our 11 fasteners from the old heater box. We will now use Black or whatever color paint you desire. *See Image 4.*

So a few minutes have passed. The seal is glued and set on the back of your panel. Your old hardware is clean and painted. All this has dried.

You now want to put the panel in place using a few screws ran in hand tight. We will leave the left side screw out where the clamps will be running down.



Image 4

Next take your 3/8" ID silicone hose and push to the drain barb. (No clamp required). We will shape the hose to the inside of the body. Wrap our clamp around the hose starting from the top down, ensuring the drain line is not kinked.

Install the next lower hose and clamp. When completed it should look like Image 5.

We will now go around and snug all 11 factory bolts without over torqueing and warping our panel.

For the next procedure lets go up top. There is a gap between the factory cowl and the new cowl panel. We will run a bead of caulk (not supplied due to multiple color vehicles) between the area. This is highlighted in PURPLE. The area in Orange can be done but with the HVAC gasket it is not necessary. They did do this in the factory application and it most certainly cannot hurt. *See Image 6.*

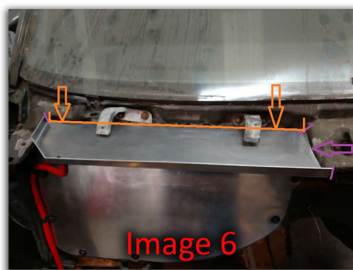


Image 6

Now we start re assembly option. Lower cowl panel trim and seal. *See Images 7 and 8.*



Image 8

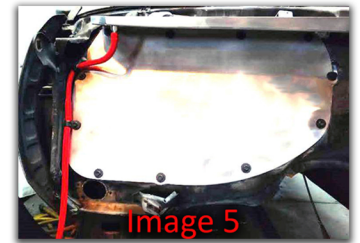


Image 5

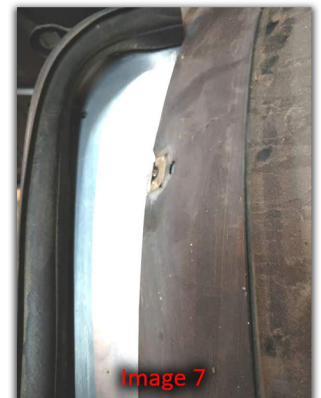


Image 7

Well congratulations. In under an hour you have installed the finest U.S. Made Aluminum One Piece Heater / AC delete panel with drain on the market. If completed depending on what add ons you wanted or color choices it should look something like Image 9.



Image 9